



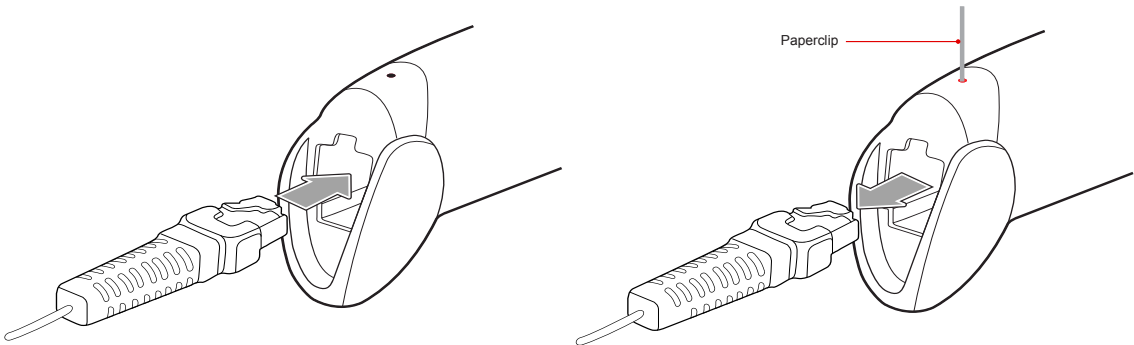
The Unitech AS10 Linear Imager Scanner
Installation Instructions & Popular Configuration Settings

SETUP AND INSTALLATION

The following steps will walk you through the installation process.

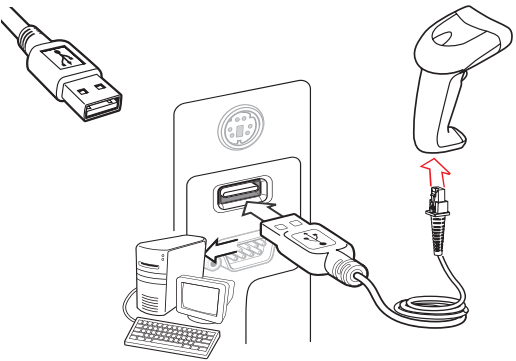
Depending on the model you have purchased, follow the instructions for a USB or PS/2 connection to your computer. Then move on to the Test & Finish box.

CONNECTING AND DISCONNECTING THE INTERFACE CABLE



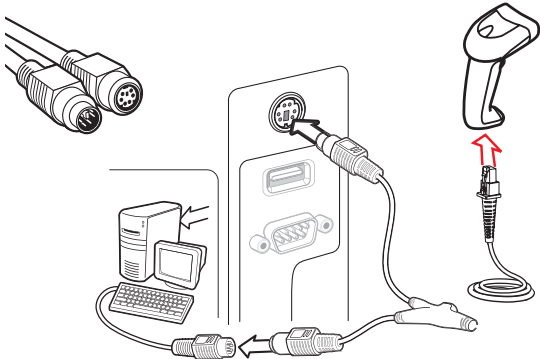
Your device may already be attached to the cable. An audible “click” sound indicates the interface cable has been plugged in correctly and the connector lock is engaged. To unplug the interface cable, release the connector lock by inserting one end of a paperclip into the handle.

CONNECT TO HOST VIA USB



Plug the interface cable into a free USB port of a host computer.

CONNECT TO HOST VIA PS/2



Plug the PS/2 cable into the keyboard port on your host computer.

TEST & FINISH

Open a word processing program such as Microsoft Word or Notepad on your host. Now scan the following barcode:



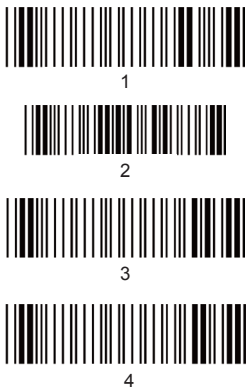
If the word “Unitech” appears on the screen you have successfully installed your scanner. Congratulations!

SETTINGS AND CONFIGURATION

The following section covers the most common configuration settings for your AS10 scanner. They are completely optional.

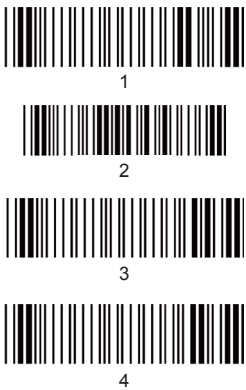
For additional configuration options please visit unitechscanners.com/AS10 and select the “Download” tab. You will find the User’s Manual and a variety of other resources.

TAB MODE



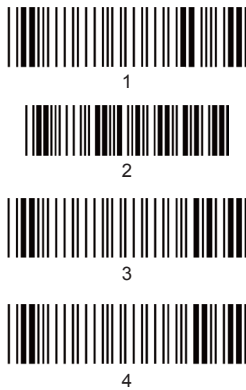
You may wish to set your scanner to “Tab Mode.” In this mode, data will tab over to the next column as you scan. Scan this series of barcodes to switch to Tab Mode from the default Enter Mode.

ENTER MODE



Scan this series of barcodes to switch back to Enter mode. In Enter Mode, data will jump to the next line as you scan.

FLASH MODE



Scan this series of barcodes to switch to Flash Mode from the default Trigger Mode. In Flash mode, the AS10 will function automatically. It will scan at a set interval.

TRIGGER MODE



Scan this series of barcodes to switch back to Trigger Mode. In Trigger Mode, the AS10 will scan only when the scanner button is pressed.

DEFAULT SETTINGS



Scan here to return your scanner to its original factory settings, a useful feature for troubleshooting purposes.

HOW CAN WE HELP YOU?

The AS10 is a plug-and-play scanner. It does not require a driver and should be recognized as a generic HID device by your computer, similar to a standard keyboard. This allows you to scan into any field that you could normally type into.

Unitech's professional support team is available to quickly answer questions or technical-related issues. Should equipment issues occur, please contact a Unitech Support Engineer at (800) 861-8648 for more information.

TRY A UNITECH WIRELESS
POCKET SCANNER FOR
YOUR SMARTPHONE,
TABLET, OR COMPUTER

shop-unitech.com



MS910

ALL-PURPOSE POCKET SCANNER

- Size of a pack of gum
- Bluetooth compatible with iOS, Android, Windows



MS912

MEMORY POCKET SCANNER

- 2 MB memory
- Bluetooth and Batch scanning



MS920

2D POCKET SCANNER

- Reads 1D/2D barcodes
- 32 MB memory
- IP54 environmental seal